

# PerCP Anti-Human CD3 (UCHT1) Monoclonal Antibody



天津三箭生物技术股份有限公司  
Tianjin Sungene Biotech Co., Ltd.  
精准 高效 稳定 Precision Efficient Stable

Catalog Number	Vial Size
H10034-32G	25 tests
H10034-32H	100 tests

**Market** | 400-621-0003  
marketing@sungenebiotech.com

**Support** | 022-66211636-8024  
techsupport@sungenebiotech.com

**Web** | www.sungenebiotech.com

**Important Note:** Centrifuge before opening to ensure complete recovery of vial contents.  
This product is guaranteed up to one year from purchase.

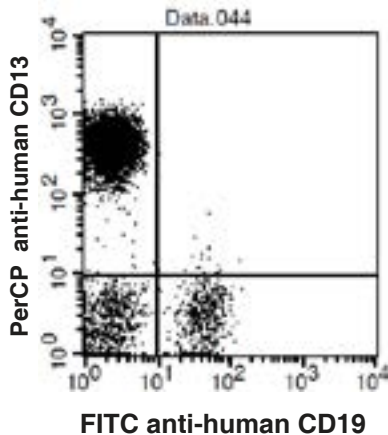
## Purified Antibody Characterization

Clone	Isotype	Reactivity
UCHT1	Mouse IgG1	Human

## Description

CD3ε is a 20 kD chain of the CD3/T-cell receptor (TCR) complex which is composed of two CD3ε, one CD3γ, one CD3δ, one CD3ζ (CD247), and a T-cell receptor (α/β or γ/δ) heterodimer. It is found on all mature T cells, NK-T cells, and some thymocytes. CD3, also known as T3, is a member of the immunoglobulin superfamily that plays a role in antigen recognition, signal transduction, and T cell activation.

## Illustration of Immunofluorescent Staining



Human peripheral blood lymphocytes stained with PerCP anti-human CD3 and FITC anti-human CD19

## Product Information

**Conjugation:** PerCP

**Formulation:** PBS pH 7.2, 0.09% NaN<sub>3</sub>, 0.2% BSA

**Storage:** Keep as concentrated solution. Store at 4°C and protected from prolonged exposure to light. **Do not freeze.**

**Application:** Recommended Application: FC

**Usage:** Each lot of this antibody is quality control tested by immunofluorescent staining with flow cytometric analysis (The amount of the reagent is suggested to be used from 20 μL to 5 μL per 100 μL of peripheral blood. Please check your vial). Since applications vary, the appropriate dilutions must be determined for individual use.

## References

- [1] Barclay, N., et al. 1993. The Leucocyte FactsBook. Academic Press. San Diego.
- [2] Beverly, P., et al. 1981. Eur. J. Immunol. 11:329.
- [3] Lanier, L., et al. 1986. J. Immunol. 137:2501-2507.

**For Research Use Only.**